

SUPPLY

DRAINAGE

SUPPORT

APPENDIX



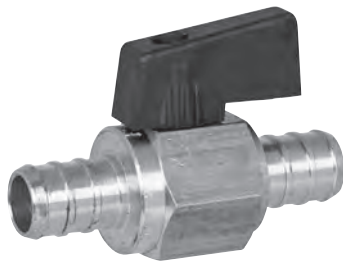
648X3

PowerPEX™ Brass Ball Valve

- Chrome-plated ball, blowout-proof stem
- ANSI/NSF 61
- C-377 forged brass



Item No	Connection	Pkg	Min Qty	Case Qty
STANDARD PORT				
648X2	½" F1807	B	10	100
648X3	¾" F1807	B	10	100
648X2PK	½" F1807	B	10	10
648X3PK	¾" F1807	B	10	10
648X4	1" F1807	B	6	60
FULL PORT				
648X4FP	1" F1807	B	10	10
648X4FPPK	1" F1807	C*	6	6



648X92PK1

PowerPEX™ Brass Mini ¼-Turn Ball Valve

- Compact supply valves

Item No	Connection	Pkg	Min Qty	Case Qty
648X92PK1	½" F1807	C*	12	12
648X93PK1	¾" F1807	C*	12	12



648XG3

PowerPEX™ No Lead Brass Ball Valve

- Chrome-plated ball, blowout-proof stem
- ANSI/NSF 61



Item No	Connection	Pkg	Min Qty	Case Qty
648XG2	½" F1807	B	10	120
648XG3	¾" F1807	B	8	96
648XG4	1" F1807	B	4	40



648X3W

PowerPEX™ Brass Stop & Waste Valve

- Brass valve body with stuffing box, neoprene seals
- Lead-free solder joints

Item No	Connection	Pkg	Min Qty	Case Qty
648X2W	½" F1807	B	12	12
648X3W	¾" F1807	B	12	12
648X2WPK	½" F1807	C*	10	10
648X3WPK	¾" F1807	C*	10	10